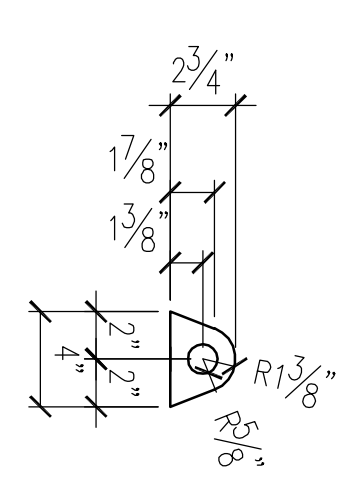
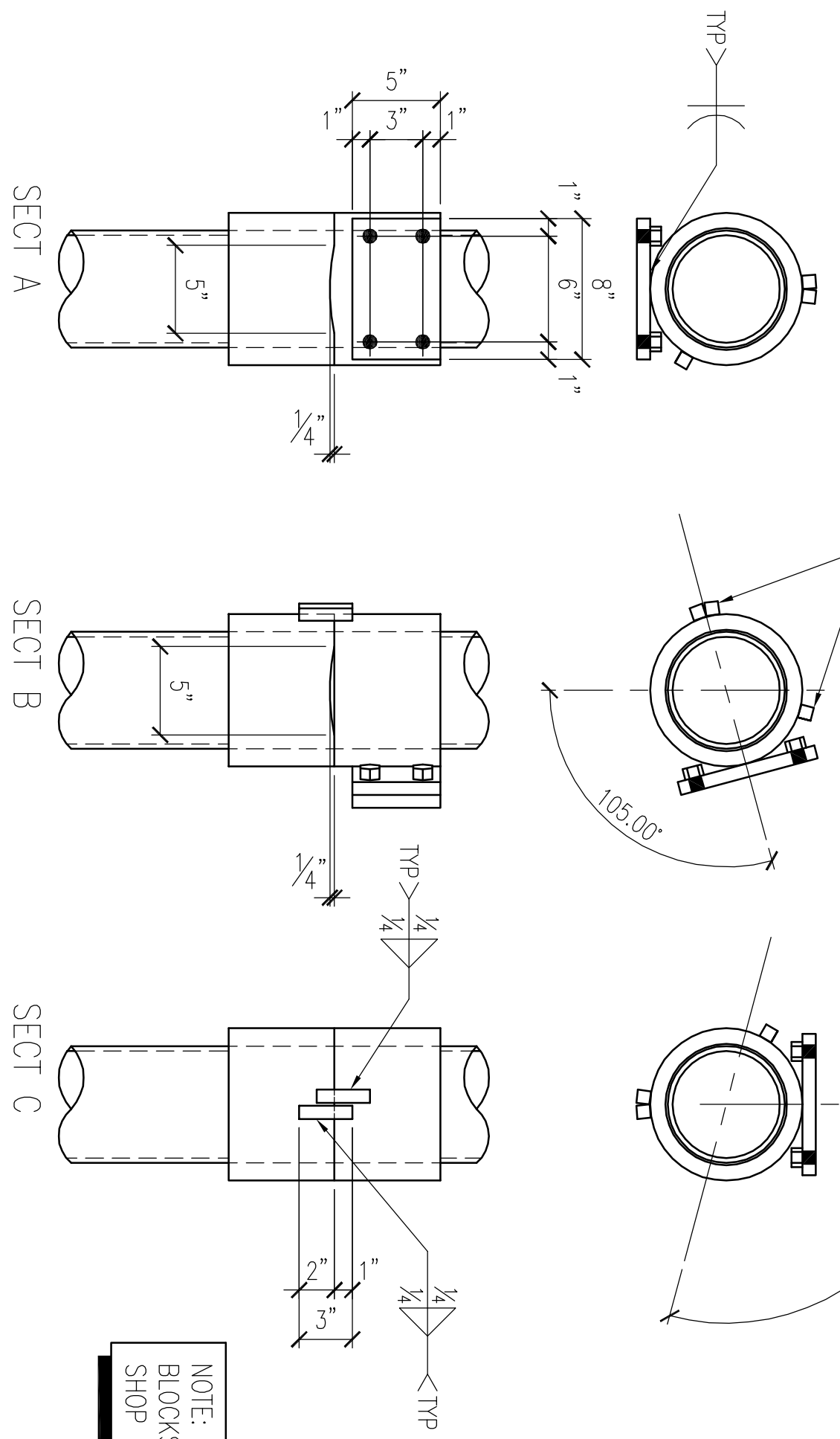


ONE - TRASH GATE - SM1

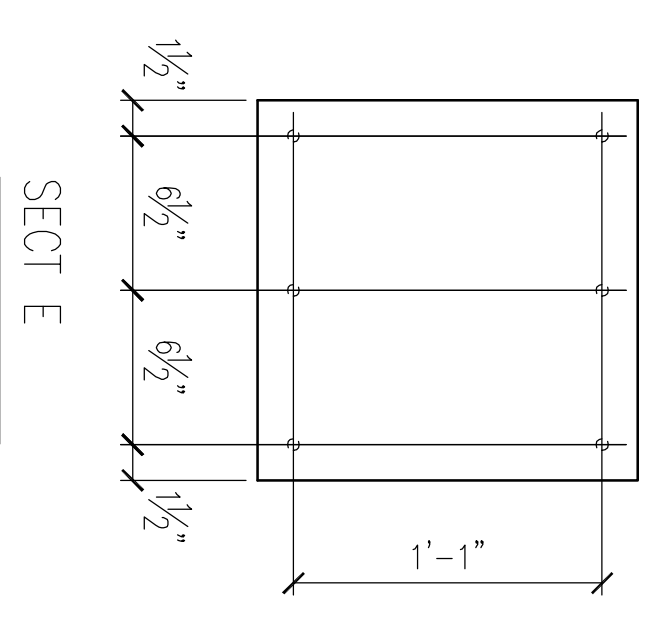
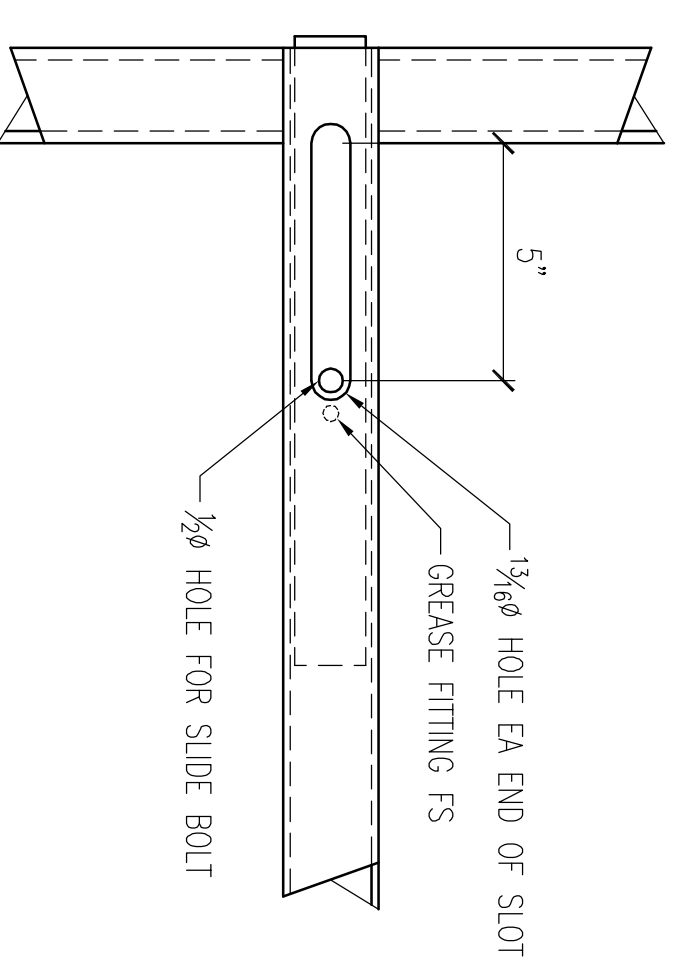
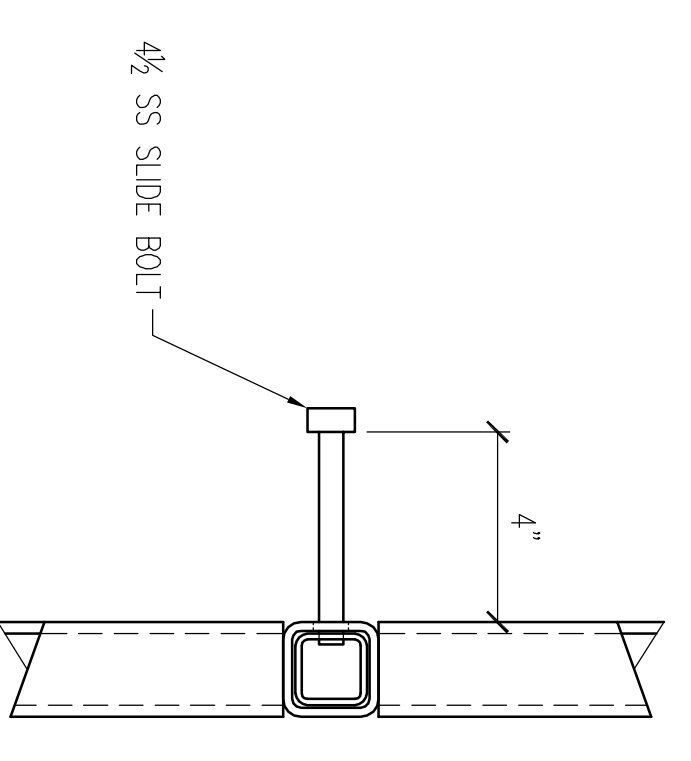
FAB BY: ✓ BY:

APPROVER PROVIDE WELD SIZE



Pb5

NOTE: RADIUS LEFT CAM AND STOP BLOCKS @ TOP HINGE ONLY EA SIDE SHOP FIT TO PROVIDE 105° SWING



ITEM	QTY	DESCRIPTION	LENGTH	REMARKS
SM1	ONE	TRASH GATE		
P55	8	PL 3/4x5	0-8	
P55	2	PL 3/4x2 1/4	0-4	
M55	2	6 Ø SCH 40 PIPE	6'-11	
M55	8	Ø SCH 120 PIPE	0-6	
M55	2	2x2x 1/8 TUBE	1-9 1/2	STAINLESS
M55	ONE	1 1/2x 1/4x 1/8 TUBE	1-1 1/2	STAINLESS
M55	6	SOLID SO 3/4	0-3	
	5	GREASE FITTINGS		
	ONE	SLIDE BOLT	0-4 1/2	STAINLESS
	6	2x2x 1/8 TUBE	AS REQD	
SM2	2	PL 1/2x16	1-4	
	6	1/2\"/>		

NOTE: VERIFY ALL DIMENSIONS, CONDITIONS & QUANTITIES THE FINAL NOTE OF THESE DIMENSIONS TO PREVENT OVER INTERPRETATION OF THE DESIGN INTENT AS IT RELATES TO THE INDUSTRY PRACTICES. THESE DIMENSIONS AND NOTES ALL DIMENSIONS, CONDITIONS AND CONDITIONS FOR EACH ITEM ARE TO BE PROVIDED TO THE FABRICATOR. THESE DIMENSIONS AND NOTES ARE THE PROPERTY OF NICKS WELDING & FABRICATING, INC. AND SHALL REMAIN THE PROPERTY OF NICKS WELDING & FABRICATING, INC. IN THE EVENT OF ANY DISPUTE OR LITIGATION.

NOTE: MATERIALS WILL BE PROVIDED AS SHOWN UNLESS OTHERWISE SPECIFIED. THE WORK ORGANIZATION MATERIALS WILL NOT BE ACCEPTED UNLESS SPECIFICALLY APPROVED BY NICKS WELDING & FABRICATING, INC. IN WRITTEN FORM. ANY SUCH CHANGES ARE THE RESPONSIBILITY OF THE FABRICATOR.

NOTE: APPROVE TO CORRECT ALL DEFECTS.

MATERIAL SPEC UN		REVISIONS		JOB NAME	
W/SHIFTS	A992	DATE:		CONTRACTOR:	
CHANNELS	A36	DATE:		ARCHITECT:	
ANGLES	A36	DATE:		ENGINEER:	
RECT & SQ HB5	A5003	DATE:		DRAWN BY:	WMS
ROUND HB5	A5003	DATE:		CHECKED BY:	WMS
PIPE	A338	DATE:			
PLATES	A36	DATE:			
BARS	A36	DATE:			

FINISH: 1 GREY SHOP COAT UNL.O
TOLER: 1/8\"/>

SHEET DESCRIPTION: TRASH GATES		JOB No:	
NICKS WELDING & FABRICATING, INC.		902	
18347 PROSPECT RD. FORTON, WI 54635		SHEET No:	
TEL: (715) 563-2200 FAX: (715) 563-2201		5	