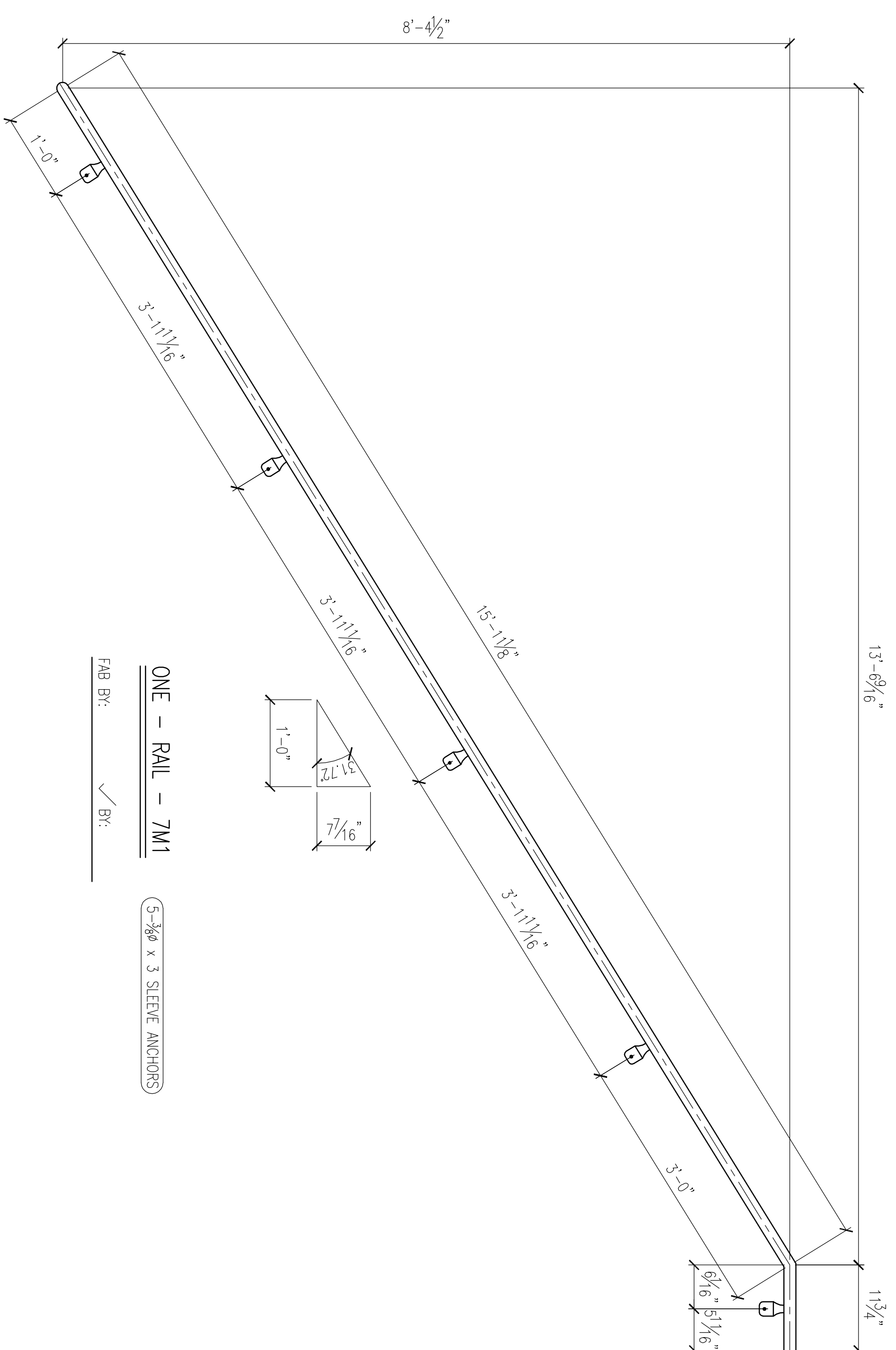
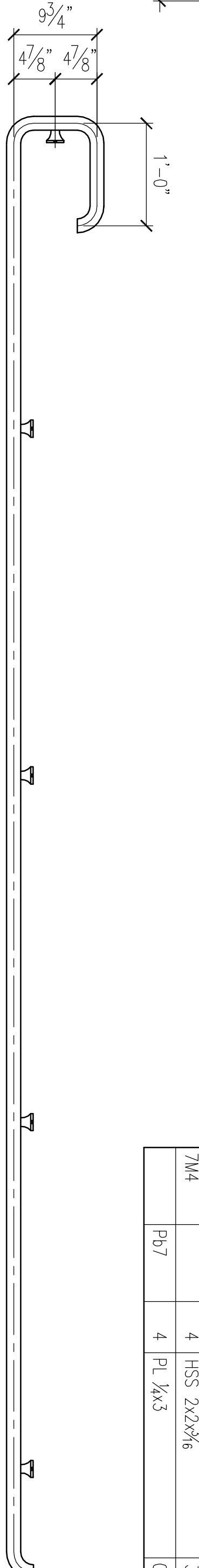
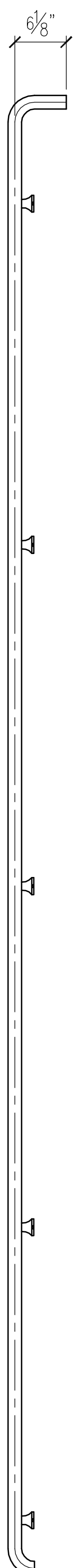


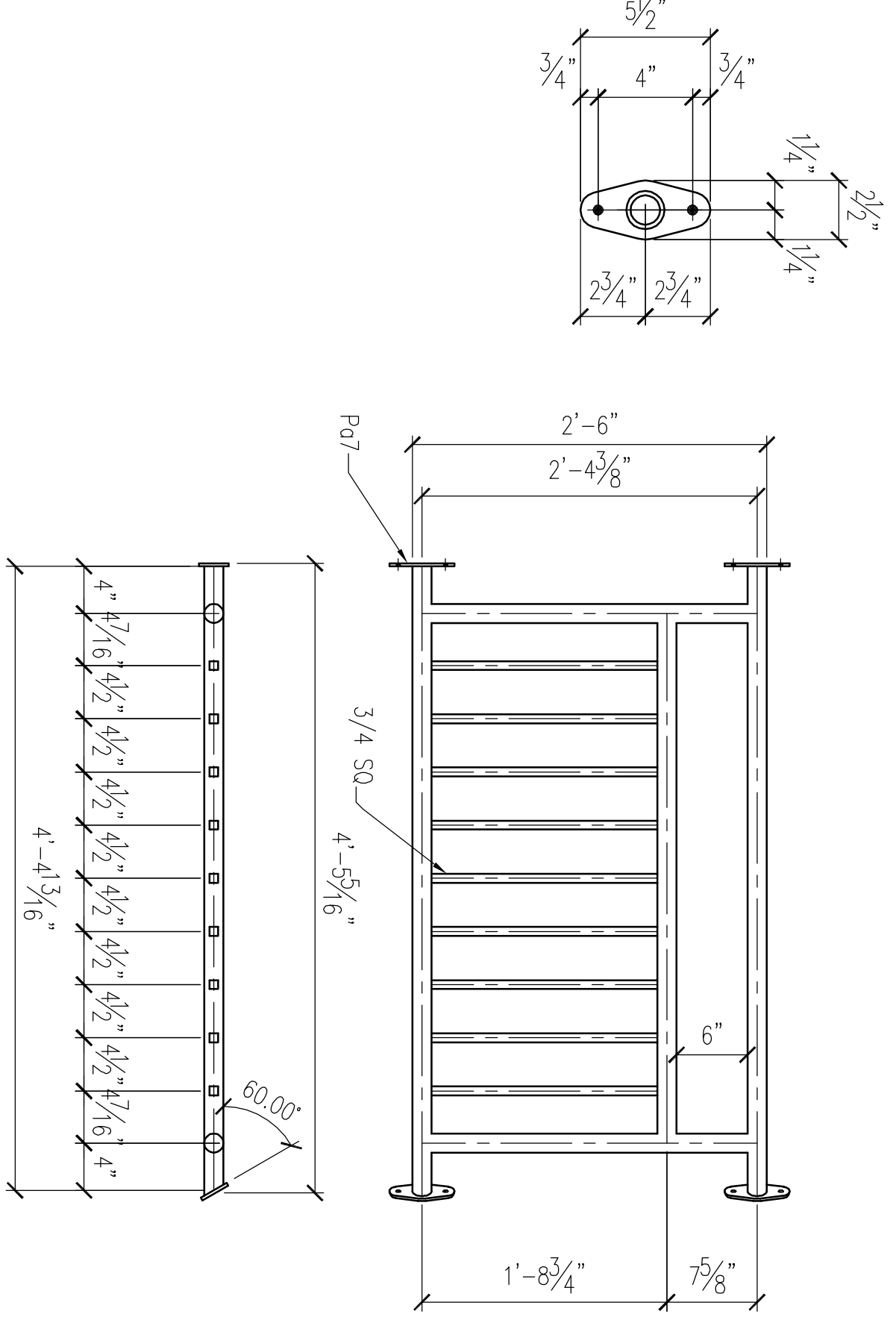
MAIN MARK	ASSEMBLY MARK	COUNT	DESCRIPTION	LENGTH	REMARKS
7M1		ONE	1½" PIPE	AS REQ'D	
7M2		ONE	1½" PIPE	AS REQ'D	
7M3		ONE	1½" PIPE	AS REQ'D	
	Pot7	4	PL ¼x2½"	0'-5½"	
			¾" SQUARE	AS REQ'D	
7M3A		ONE	1½" PIPE	AS REQ'D	
	Pot7	4	PL ¼x2½"	0'-5½"	
			¾" SQUARE	AS REQ'D	
7M4		4	HSS 2x2x¼"	3'-5¾"	
	Pot7	4	PL ¼x3"	0'-8"	



ONE - RAIL - 7M1

5-¾" x 3 SLEEVE ANCHORS

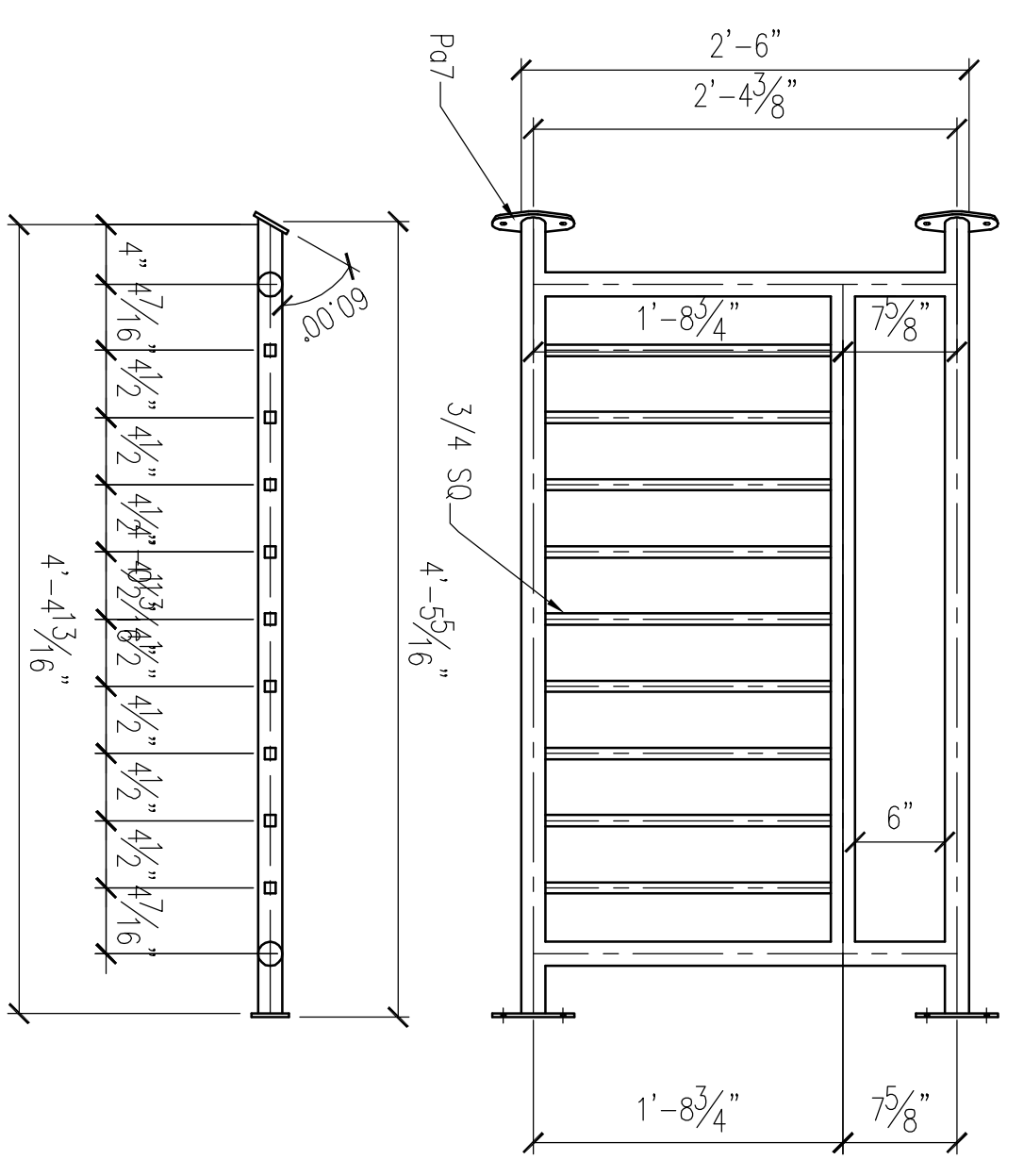
FAB BY: ✓ BY:



ONE - RAIL - 7M3

8-¾" x 3 SLEEVE ANCHORS

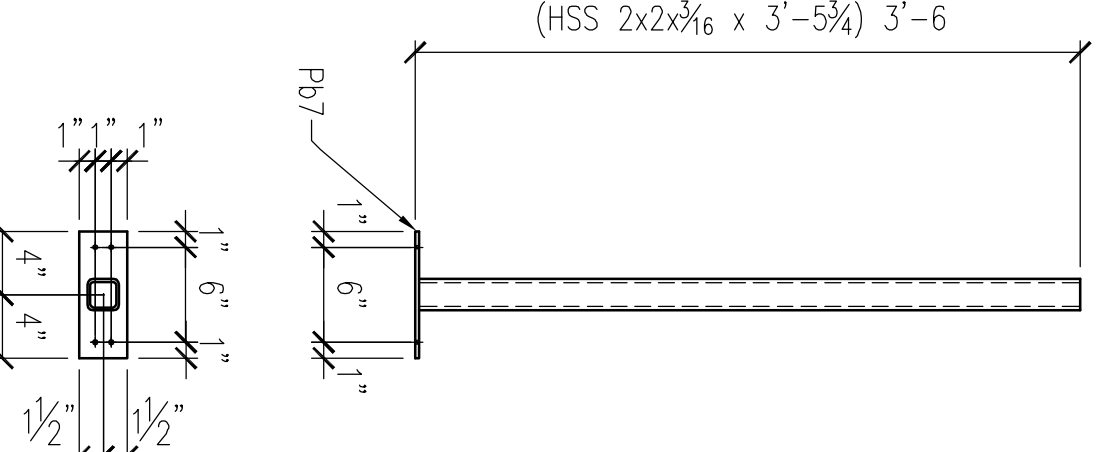
FAB BY: ✓ BY:



ONE - RAIL - 7M3A

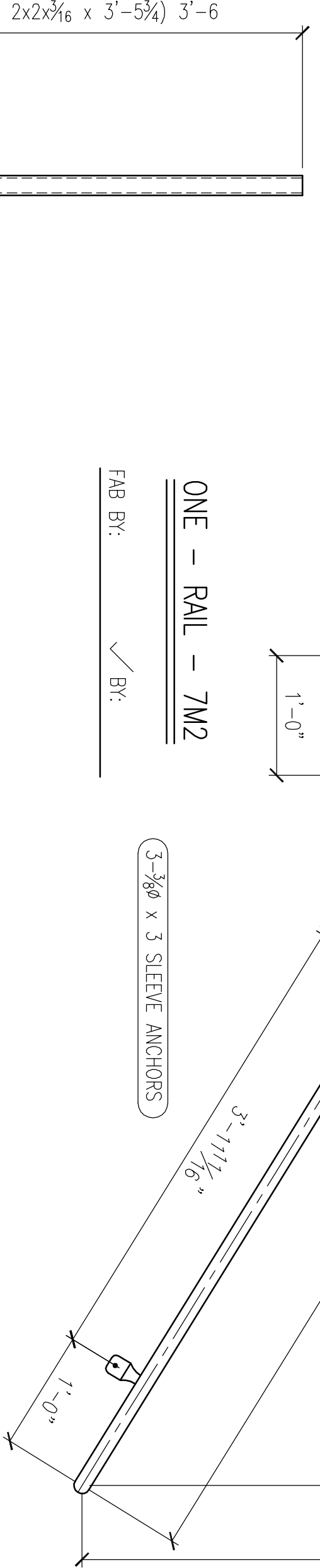
8-¾" x 3 SLEEVE ANCHORS

FAB BY: ✓ BY:



4 - GUARD WALL POST - 7M4

FAB BY: ✓ BY:



ONE - RAIL - 7M2

3-¾" x 3 SLEEVE ANCHORS

FAB BY: ✓ BY:

NOTE:
VERIFY ALL DIMENSIONS, CONDITIONS & QUANTITIES
THE FINAL REVIEW OF THESE DRAWINGS IS TO REPRESENT OUR INTERPRETATION OF THE DESIGN INTENT AS IT
APPEARS ON THE DRAWINGS. THE CONTRACTOR SHALL BE RESPONSIBLE FOR OBTAINING ALL NECESSARY PERMITS,
APPROPRIATE AND CORRECTIVE FOR REVISION PRIOR TO FABRICATION OF MATERIALS. NICKS WELDING AND
FABRICATION, INC. MAKES NO CLAIMS AND TAKES NO RESPONSIBILITY FOR THE ACCURACY OR COMPLETENESS OF
THE INFORMATION PRESENTED.

NOTE:
MATERIALS WILL BE FUSED AS SHOWN ON THE DRAWING. CHECK FOR CORRECTING WORK OR
REPLACED MATERIALS WILL NOT BE ACCEPTED UNLESS EXPRESSLY APPROVED BY NICKS WELDING &
FABRICATION, INC. IN WRITING BEFORE ANY SUCH COSTS ARE INCURRED.

MATERIAL SPEC U/I/N		SHEET DESCRIPTION: MISC			
W SHAPES	A992	NICKS WELDING & FABRICATING, INC. 108847 PROSPECT RD. HIXTOWN, WI 54635 PH: (715) 963-2200 FAX: (715) 963-2201			
CHANNELS	A36				
ANGLES	A36				
RECT & SQ HSS	A500B				
ROUND HSS	A500B				
PIPE	A53B				
PLATES	A36				
BAR	A36				
FINISH	1 GREY SHOP COAT UNLD			DESIGN	DATE:
HOLES	1/16" & UNLD			CHECKED BY:	DATE:

REVISIONS		JOB NAME	
1		DATE:	CONTRACTOR
2		DATE:	ARCHITECT
3		DATE:	ENGINEER
4		DATE:	DRAWN BY:
5		DATE:	CHECKED BY:
6		DATE:	
7		DATE:	

JOB No: 919
SHEET No: 7